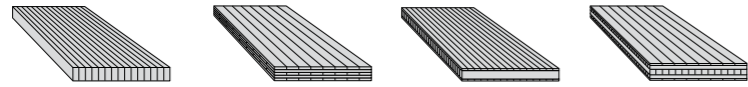


# MOSO<sup>®</sup> bamboo panels, veneer & beams

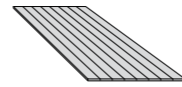


MOSO® bamboo panels, veneer & beams

solid panel



1-ply panel



Dimensions (mm)														
Thickness	7	16	19	20	20	25	30	38	38	40	40	3	4	5
Length	2440	2440	2440	2440	2440	2440	2440	2440	3100/ 4000	2440	3000 / 4000 <sup>1)</sup>	2440	2440	2440
Width	1220	1220	1220	1220	1220	1220	1220	1220	700	1220	700 / 620 <sup>1)</sup>	1220	1220	1220
Strip width														
Style														
Plain Pressed (PP)	-	•	-	•	•	•	•	-	-	•	•	•	-	•
Side Pressed (SP)	•	•	•	•	-	•	•	-	-	•	•	•	-	•
High Density* (HD)	-	-	-	•	-	-	-	•	•	-	-	-	•	-
Colours														
Natural	•	•	•	•	•	•	•	•	-	•	•	•	•	•
Caramel	•	•	•	•	•	•	•	•	•	•	•	•	•	•
Tiger	-	-	-	• <sup>2)</sup>	-	-	-	-	-	-	-	-	•	-
Finish														
Unfinished	•	•	•	•	•	•	•	•	•	•	•	•	•	•
Lacquered	-	-	-	-	-	-	-	-	-	-	-	-	-	-
Stained-Oiled	-	-	-	-	-	-	-	-	-	-	-	-	-	-
Construction (mm)														
Layer 1	2	3.5	19	4	4	4	5	3	3	4	4	3	4	5
Layer 2	3	9		12	4	17	20	6	6	8	6			
Layer 3	2	3.5		4	4	4	5	20	20	16	20			
Layer 4				4				6	6	8	6			
Layer 5				4				3	3	4	4			
Properties & certification														
Hardness (Brinell kg/mm <sup>2</sup> )	>4	>4	>4	>4	>4	>4	>4	>9.5	>9.5	>4	>4	>4	>9.5	>4
CO <sub>2</sub> neutral	•	•	•	•	•	•	•	•	•	•	•	•	•	•

HD = High Density\*  
n.d. = not determined

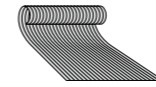
**MOSO® Bamboo Solid Panel** consists of multiple layers of bamboo, available in multiple variations with respect to size, thickness, configuration, style and colour. These bamboo panels are especially interesting in those applications where the side of the panel remains visible, such as steps of a staircase, furniture and kitchen work tops.

<sup>1)</sup> Dimensions 3000x700 mm or 4000x620 mm.

<sup>2)</sup> Tiger: Mix of natural and caramel strips, only available in High Density\*.

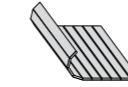
**MOSO® Bamboo 1-ply Panel** is mainly used as a panel covering material, where the bamboo is pressed, double sided, on a base (for example MDF or chipboard). Most applications require pressing on both sides of the base, to prevent possible bending. The result is a "sandwich panel".

veneer

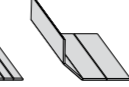


flexbamboo

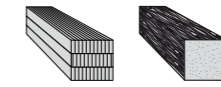
solid strip  
(fabric backing)



veneered strip  
(fabric backing)



solid beam



veneer				flexbamboo		solid beam			
0.6	0.6	0.6	0.6	2	4	55	60	72	100
2500	2500	2710	3100	45000	15000	2440	2440	2440	2440
430	1250	430	430 / 1250	2040	2040 <sup>6)</sup> 2440 <sup>7)</sup>	55	120	120	120
				7/15/17	50				
•	•	•	-			-	-	-	-
•	•	•	•			•	•	•	•
-	-	-	-			-	•	•	•
•	•	•	•	•	•	•	-	-	-
•	•	•	•	•	•	•	•	•	•
-	-	-	-	-	-	-	-	-	-
•	•	•	•	•	•	•	•	•	•
-	-	-	-	• <sup>8)</sup>	• <sup>8)</sup>	-	-	-	-
						18.3	20 (HD: 60)	6 (HD: 72)	20 (HD: 100)
						18.3	20	20	20
						18.3	20	20	20
							20	20	
							6	20	
- <sup>5)</sup>	- <sup>5)</sup>	- <sup>5)</sup>	- <sup>5)</sup>	>3	>3	>4	>4 (HD:>9.5)	>4 (HD:>9.5)	>4 (HD:>9.5)
•	•	•	•	n.d.	n.d.	•	•	•	•

**MOSO® Bamboo Veneer** is a high quality veneer, which is created by slicing sheets from laminated blocks made from bamboo strips. To avoid cracks during handling, MOSO veneer is backed with a thin, but strong cellulose fleece. This facilitates easy pressing of the veneer sheets on a panel.

<sup>5)</sup> The hardness of veneer dependent on the substrate used.

**MOSO® Flexbamboo** is a flexible bamboo product often placed on a carrier (e.g. MDF) and used as an aesthetical covering material on walls, ceilings, or furniture. The product is finished with a high quality UV cured oil (SAICOS®).

<sup>6)</sup> Available in 15m and 30m length.  
<sup>7)</sup> Only available unfinished and in 30m length.

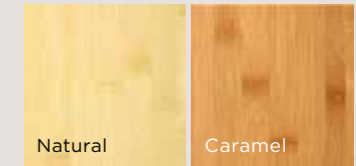
<sup>8)</sup> There are 5 additional colours available: 92=Misty-White, 94=Walnut, 95=Silver-Grey, 96=Ebony, 98=Ivory (Ivory solid only).

**MOSO® Bamboo Solid Beam** may be used in numerous applications such as window- and doorframes, where typically (expensive) scarce tropical hardwood is used. Unlike hardwood, the MOSO® bamboo solid beam is a very regular material in terms of stability and structure (no knots, no resins coming out) and is therefore easy to process.

Other dimensions are available on request.

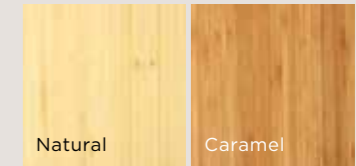
Plain Pressed

Strips are placed horizontally and glued together to create a wide line pattern with the characteristic bamboo nodes clearly visible.



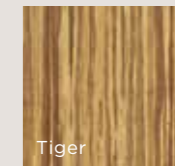
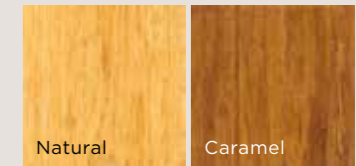
Side Pressed

Strips are placed vertically and glued together to create a narrow line pattern with the bamboo nodes visible in a subtle way.



High Density\* (HD)

Strips are compressed and glued under high pressure, creating an elegant random line pattern. The result is a panel/beam that is even harder than the best tropical hardwood species.



FSC® certification

All products are available with FSC® certification on request.

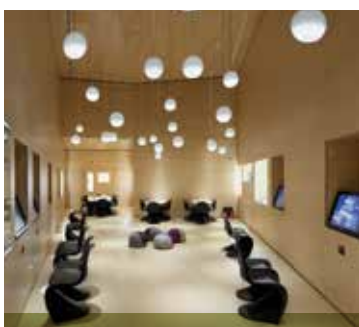


The mark of responsible forestry  
FSC® C002063



**MOSO® Solid Panel**

Fugro TechCenter, The Netherlands  
(Hidde & Peperkorn)



**MOSO® Veneer**

Guggenheim Museum Bilbao, Spain  
(Cesar Calcoya - Idom Architects)



**MOSO® Flexbamboo**

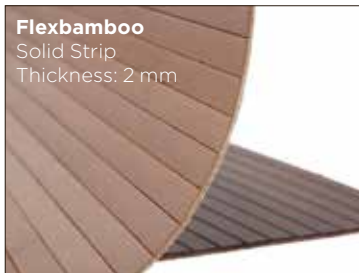
Midwives Clinic "Groei",  
The Netherlands (1:1 Architects)



**MOSO® Solid Beam**

Van Oord Head Office, The Netherlands  
(INBO/dJGA Architects)

MOSO® offers a very **broad assortment** of bamboo **panels, veneer and beams** in **various dimensions, colours and textures**. These products are used **worldwide** in **various applications** ranging from wall covering, ceilings, window frames, doors, stairs, furniture and kitchens.



**MOSO® Bamboo Products**

MOSO® is the European market leader in the development of innovative and sustainable bamboo products for interior and exterior applications for the green building industry and beyond.